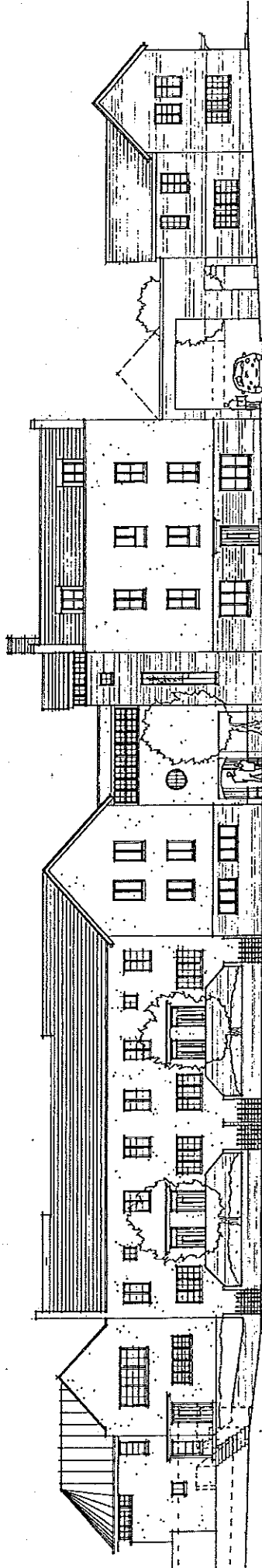


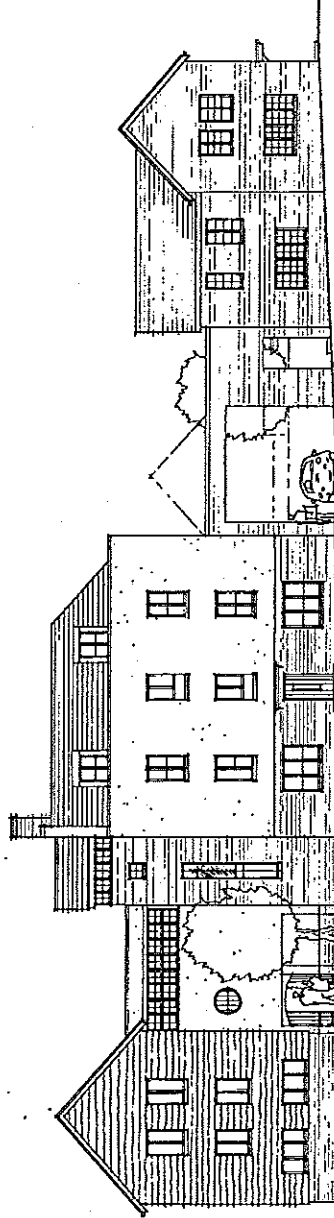


STATION ROAD, GODALMING



CONCEPT STREET ELEVATION

P155



ALTERNATIVE OPTION



Project: Station Road, Godalming  
 Client: Thames Valley Charitable Housing Association  
 Date: 20/04/19  
 No. 482/219  
 © 2019 Thames Valley Charitable Housing Association  
 All Rights Reserved. For more information visit [www.thamesvalleycharitablehousing.co.uk](http://www.thamesvalleycharitablehousing.co.uk)